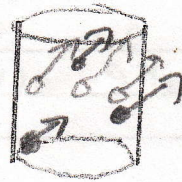
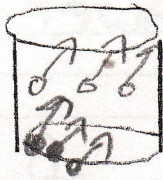


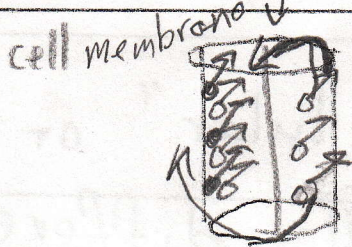
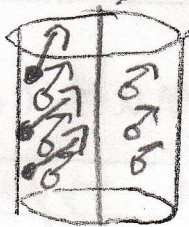
V a) What is "diffusion"? Explain with a drawing.
 Movement of particles from high concentration to low concentration.

Particles spread out!



♂ = H_2O
 ♂ = salt

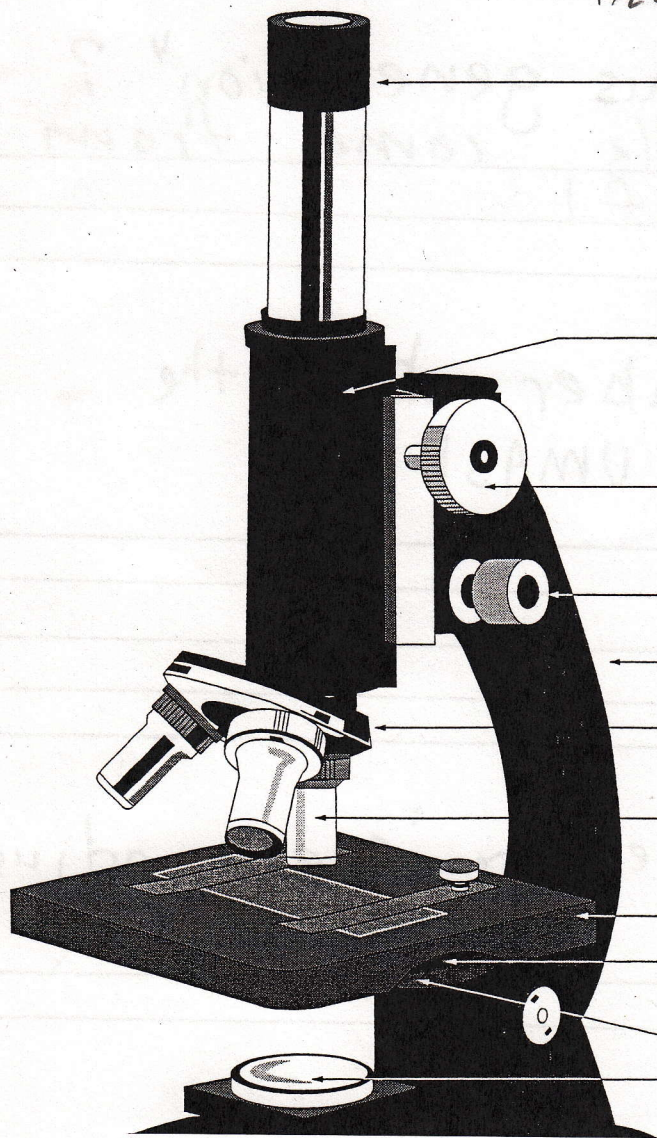
b) What is "osmosis"? Explain with a drawing.
 Movement of H_2O from high concentration to low concentration across a cell membrane.



♂ = H_2O
 ♂ = salt

H_2O moves

VI



A eyepiece

B tube

C coarse adjustment

D fine adjustment

E arm

F rotating nosepiece

G objective lens

H stage

I condenser lens

J diaphragm

K light source